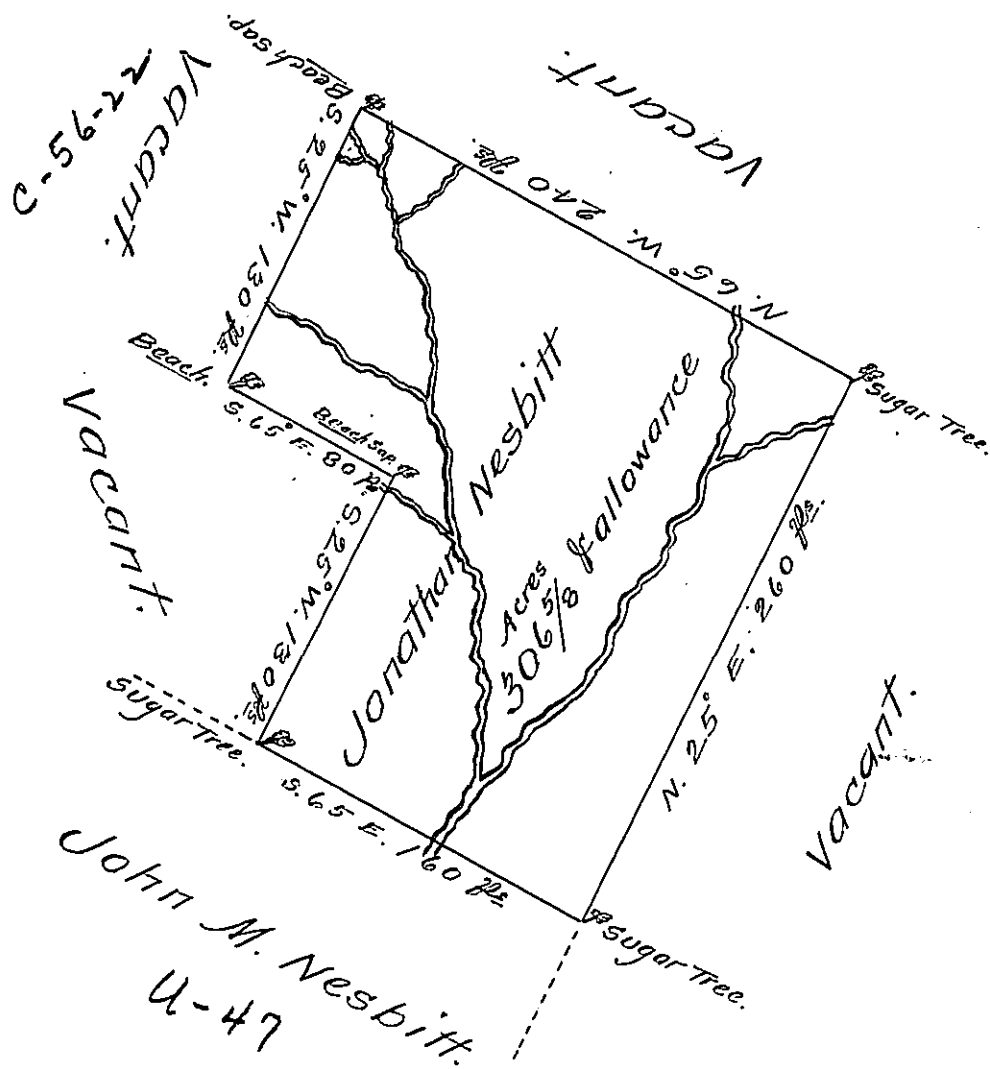


C-52-94

Sec B-20-102



A Draught of a Tract of Land called _____
 Situate on the waters of Wyalosing Creek adjoining
 lands Granted to Un^o. Maxwell Nesbitt in the County
 of Northumberland Containing three hundred and
 six acres and One hundred perches besides the
 usual allowance of six $\frac{1}{2}$ Cent for Roads &^{ts}. Surveyed
 the 14th. day of September 1776 for Jonathan Nesbitt
 In pursuance of a Warrant dated the 19th. day of
 August 1774.

by Chas^s Stewart Dep. Sur^s.

To John Lukens Esq^t.
 Sur^s. Gen^l.

IN TESTIMONY that the above is a copy of the original remaining on file in
 the Department of Internal Affairs of Pennsylvania, made
 conformably to an Act of Assembly approved the 16th day of
 February, 1833, I have hereunto set my Hand and caused
 the Seal of said Department to be affixed at Harrisburg,
 this tenth day of March 1908.

Henry Howe
 Secretary of Internal Affairs.